

Nirmatrelvir/ritonavir
PAXLOVID® (300/100) or (150/100)

Positive
Test

Age 12+

w/in 5 days
of sxs

40 kg+

*At risk for progression to
severe COVID19*

1

Check renal function

- eGFR \geq 60 mL/min
= No adjustment
- eGFR \geq 30 to $<$ 60 mL/min
= Adjust dose

2

[Covid19-druginteractions.org/checker](https://www.covid19-druginteractions.org/checker)



COVID-19 Drug Interactions



UNIVERSITY OF
LIVERPOOL

COVID19 – Early Viral Upper Respiratory Phase

Nirmatrelvir/ritonavir (Paxlovid®)

- 88-89% reduction in progression if given in the first 3-5 days
- 3 tabs BID x 5 days

Remdesivir (Veklury®)

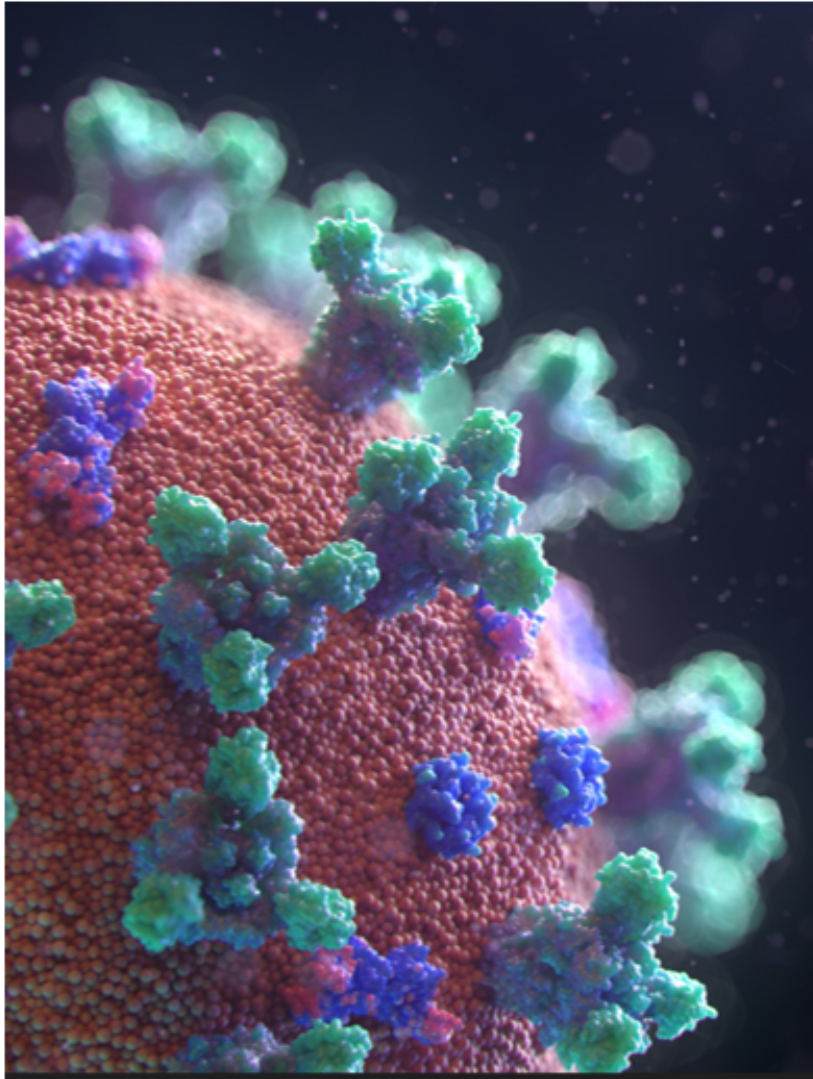
- 87% reduction in progression if given in the first 5 days (can give within 7 days)
- Non-hospitalized patients: 3-day IV infusion
- Hospitalized patients: Duration is usually 5 days, or until hospital discharge, up to 10 days

Molnupiravir (Lagevrio®)

- 30% reduction in progression (CI pregnancy) if given in the first 5 days
- 1 tab PO BID x 5 days

Convalescent Plasma

- Immunosuppressed patients with no other treatment options, 1st week before hospitalization



<https://unsplash.com/s/photos/coronavirus>

COVID19 – Early Viral Upper Respiratory Phase

AVOID

- Unnecessary antibiotics
- Steroids given prior to the early inflammatory phase
- Ivermectin
- Hydroxychloroquine
- Fluvoxamine
- Colchicine
- Metformin

Risk Factors for Progression to Severe Illness

- **Age**
- Cancer
- Chronic kidney disease
- Chronic liver disease
- Chronic lung disease
 - **Asthma, COPD**, cystic fibrosis
- Dementia or other neurological conditions
- **Diabetes** (type 1 or type 2)
- Disabilities
 - **Difficulties with self care, ADLs**
 - **ADHD**, intellectual/developmental disabilities
 - Cerebral palsy, birth defects
 - Spinal cord injuries
 - Down syndrome
- **Heart Conditions**
 - CAD, HTN, CHF
- HIV
- Immunosuppressing conditions
 - Organ transplant
 - Bone stem cell transplant
 - Corticosteroid use
 - Immunodeficiencies
- **Mental health conditions**
 - Depression
 - Schizophrenia
- **Overweight & Obesity**
- **Physical inactivity**
- Pregnancy
- Sickle cell disease or thalassemia
- **Smoking, current or former**
- Stroke or cerebrovascular disease
- **Substance use disorders**
 - Including alcohol use disorder
- Tuberculosis

COVID19 Early Inflammatory Lower Respiratory Hypoxic Phase Treatment Summary

Steroids

- Dexamethasone 6 mg a day x 6 days
- After the 1st week and oxygen sat <94%

Anticoagulation Guidelines

- <https://www.hematology.org/education/clinicians/guidelines-and-quality-care/clinical-practiceguidelines/venous-thromboembolism-guidelines/ash-guidelines-on-use-of-anticoagulation-in-patients-with-covid-19>

Pulmonary Support

- Oxygen supplementation
- Intubation/ventilation

Remdesivir

- If still in the first 10 days from symptom onset and not on a ventilator

Immune modulation: Tocilizumab (IL6-R blocker) and in some cases Baricitinib

- Only if there is progression and benefits outweigh the risks

AVOID

- Unnecessary antibiotics and unproven therapies